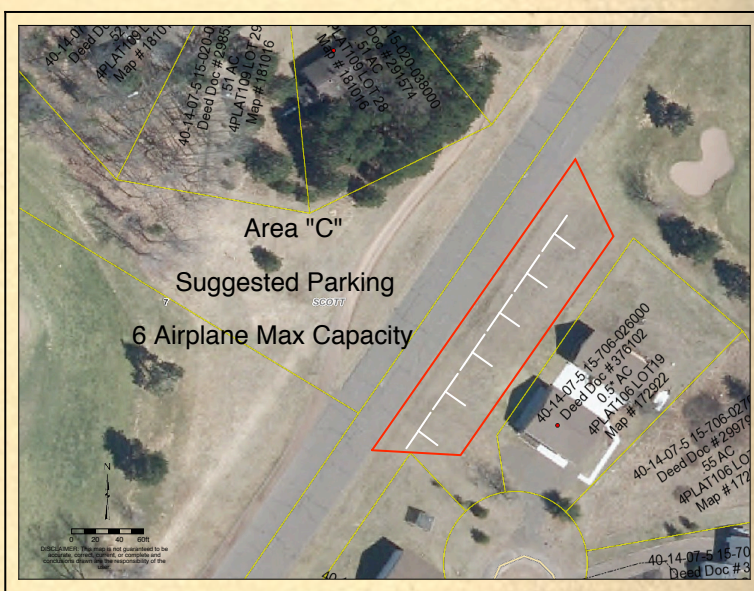
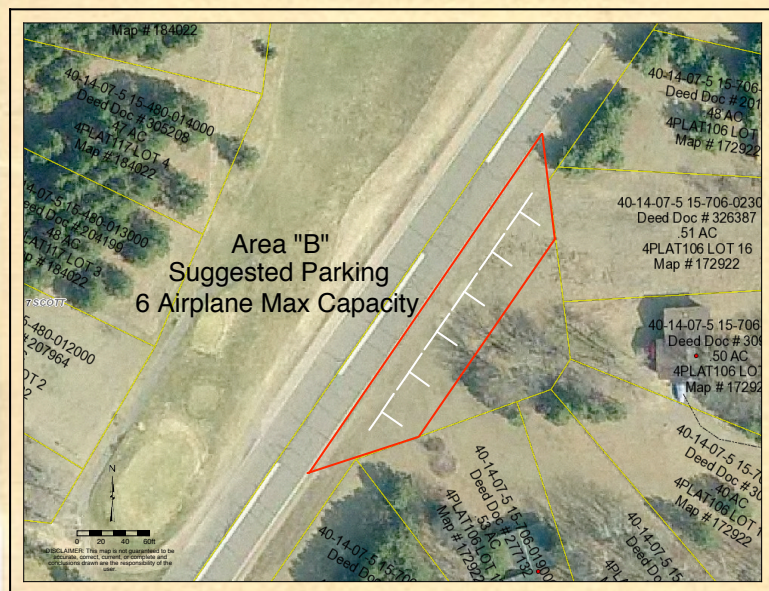


# VOYAGER (9WN2) AIRCRAFT PARKING



## AIRCRAFT PARKING AREAS & INSTRUCTIONS



### **A maximum of 40 aircraft can be parked on the field at one time.**

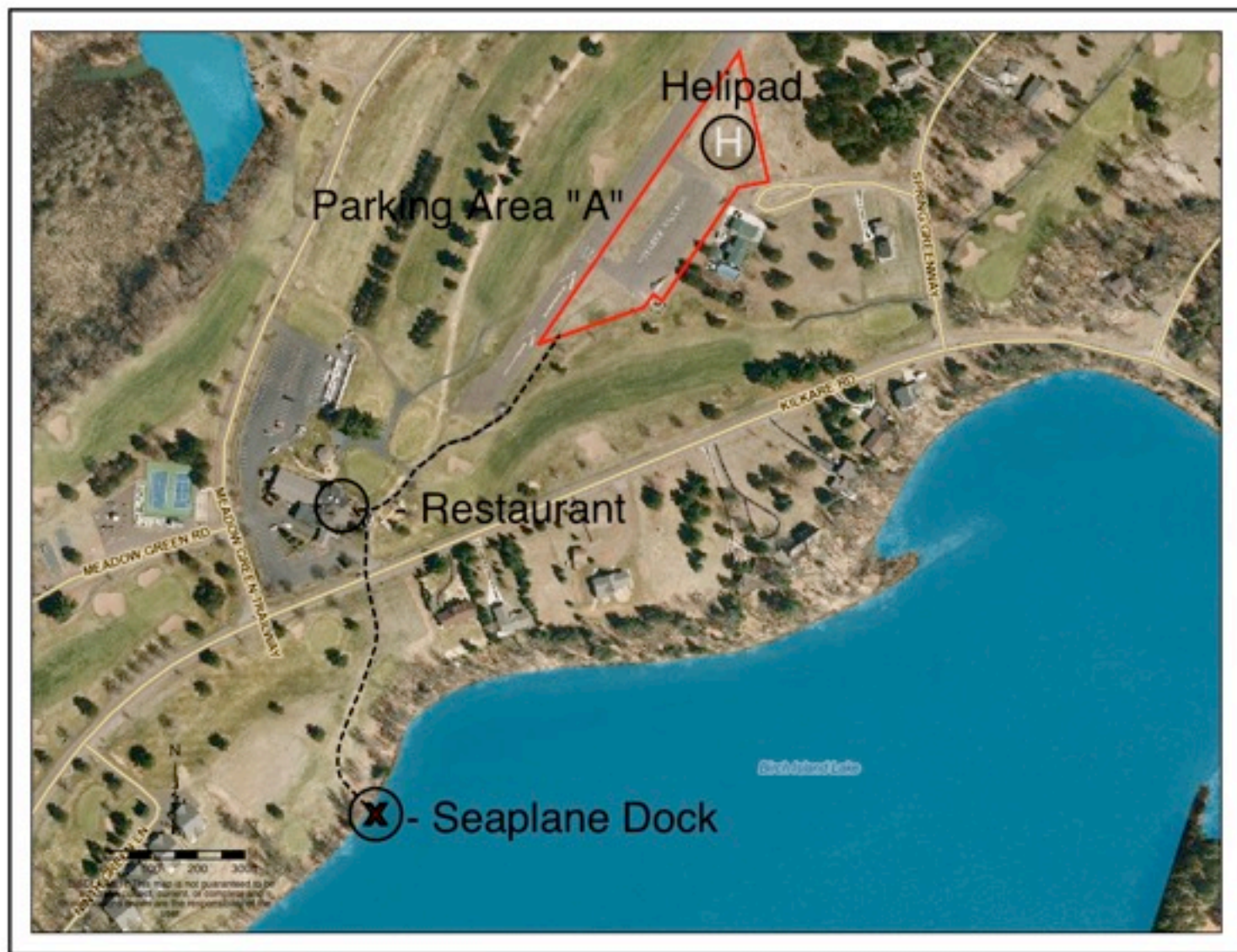
- There are 7 locations marked on the paved ramp area with tie down anchors and 5 additional parking locations on the paved ramp without tie downs.
- Some chocks (bright orange) are available for guests to use, located towards the windsock.
- Helipad may be used for helicopter or aircraft parking - first come/first choice.
- Seaplane dock has room for 1-2 floatplanes.
- In the event airport parking is filled to capacity on the pavement, the remainder of aircraft are to park in the grassy areas as shown on the map.
- Pilots are strongly encouraged to tie down their aircraft.
- The pilot is responsible for tie down rope and is responsible for how the aircraft is left at the airport.
- Tie downs are not available in the overflow grassy parking areas. Please bring your own.
- When walking along the runway, please stay on the outside of the runway lights.

**All Aircraft parking is at the risk of the owner and/or operator of the aircraft.**

# VOYAGER (9WN2) AIRCRAFT PARKING



## SEAPLANE & HELICOPTER AIRPORT PARKING AREAS & INSTRUCTIONS



**A maximum of 40 aircraft can be parked on the field at one time.**

- There are 7 locations marked on the paved ramp area with tie down anchors and 5 additional parking locations on the paved ramp without tie downs.
- Helipad grassy area may be used for helicopter or aircraft parking - first come/first choice.
- Seaplane dock has room for 1-2 floatplanes.
- In the event airport parking is filled to capacity on the pavement, the remainder of aircraft are to park in the grassy areas as shown on the map.
- Pilots are strongly encouraged to tie down their aircraft.
- The pilot is responsible for tie down rope and is responsible for how the aircraft is left at the airport.
- Tie downs are not available in the overflow grassy parking areas. Please bring your own.
- Dashed lines represents walking paths. Please stay on the outside of the runway lights when walking.

**All Aircraft parking is at the risk of the owner and/or operator of the aircraft.**